

KIMBERLEY SCHOOL

**SIXTH
FORM**



SUBJECT

Entry Requirements



The
Kimberley
School

East Midlands
Education Trust



SIXTH FORM

ENTRY REQUIREMENTS



ART

Grade 5 in GCSE Art, if the criteria is not met, students will need to demonstrate their skills to the department.

BUSINESS

GCSE Grade 5 in Maths and Grade 5 in English. A grade 4 in English may be accepted following discussions with the SPL / Head of Sixth Form.

BUSINESS - CTEC L3

GCSE Grade 4 in Maths and English.

COMPUTING SCIENCE

Grade 5 in GCSE Computing or Cambridge Nationals in IT M2. A grade 4 may be accepted following discussions with the SPL / Head of Sixth Form

CYBER SECURITY & NETWORKS – CTEC L3 AAQ

You will ideally have studied IT or Computing Science at GCSE level (but not essential) but you will have an interest in IT or Computing; have a minimum of Grade 4 in English and Maths.

DRAMA & THEATRE STUDIES

Grade 5 in Drama.

FOOD SCIENCE & NUTRITION L3 Diploma

Grade 5 in GCSE Food Preparation and Nutrition.

PRODUCT DESIGN / FASHION AND TEXTILES

GCSE Grade 5 in one of: Resistant Materials, Graphics or Textiles - Grade 4 may be considered subject to NEA results at GCSE.

ECONOMICS

GCSE grade 5 in English and grade 6 in Maths - Grade 5 in maths may be accepted following discussions with the SPL / Head of Sixth Form.

ENGLISH LITERATURE

GCSE English Grade 5 - A grade 4 may be accepted following discussions with the SPL / Head of Sixth Form.

ENGLISH LANGUAGE & LITERATURE

GCSE English Grade 5 - A grade 4 may be accepted following discussions with the SPL / Head of Sixth Form.

GEOGRAPHY

GCSE Geography Grade 5. A grade 4 may be accepted following discussions with the SPL / Head of Sixth Form.

HEALTH & SOCIAL CARE – CTEC L3 AAQ

Level 2 Pass Grade in Health and Social Care is desirable, students with grade 4 in a Humanities GCSE also acceptable. Grade 4 in a Science GCSE.



HISTORY

GCSE History Grade 5. GCSE English grade 5 is also required.

LANGUAGES

GCSE Grade 6 in the Language.

MATHS

GCSE Maths Grade 6.

MATHS STUDIES – AS Level

Students studying Science(s), Psychology, Geography or Economics but not taking A-level Maths and with a grade 5 or below in GCSE Maths.

FURTHER MATHS

GCSE Maths Grade 7.

MEDIA

GCSE English Language Grade 5.

MUSIC – Level 3 National cert.

GCSE Music grade 6, plus grade 4+ practical exam (or equivalent standard) in any instrument and grade 3-4 in musical theory (any recognised board).

SPORT AND PHYSICAL ACTIVITY – CTEC L3 AAQ

GCSE Science grade 4 and GCSE English grade 4

PHOTOGRAPHY

Minimum of 5 GCSE passes at grades 4-9.

PSYCHOLOGY

GCSE English grade 4 and GCSE maths grade 5 is preferred. A grade 4 may be accepted following discussions with the SPL / Head of Sixth Form.

RELIGIOUS STUDIES

GCSE grade 5 in English and RE is preferred. A grade 4 may be accepted following discussions with the SPL / Head of Sixth Form.

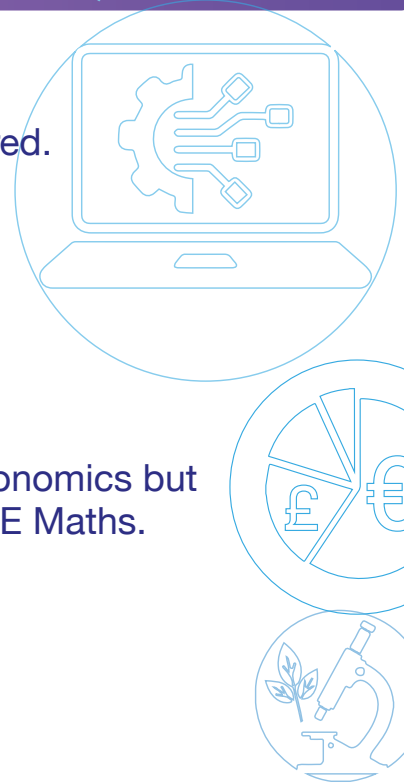
SCIENCES (Biology, Chemistry, Physics)

GCSE Triple Science grade 6 in the chosen Science or GCSE Combined Science Grade 6 in their chosen Science: GCSE Maths grade 6.

SOCIOLOGY

GCSE English grade 5 is preferred. A grade 4 may be accepted following discussions with the SPL / Head of Sixth Form.

Please note: All courses listed are A Levels unless otherwise stated.



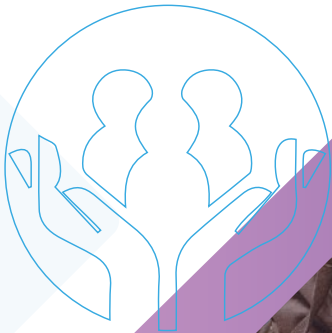
SIXTH FORM

ENTRY REQUIREMENTS



Some facts to explain the requirements:

- **A-Levels** are a **Level 3** qualification.
GCSEs are a **Level 2** qualification.
- A-Levels are achieved through **2 years of study**.
- Students are **examined in the summer of Year 13** on all topics studied across the 2 years of their course.
- To enter the Sixth Form, students need to achieve a **minimum of 5 grades** (achieving 9-4) across their GCSEs.
- There are further **individual entry requirements for each course**. These are listed with each applicable subject.
- Students in the Sixth Form are expected to choose **3 or 4 subjects initially**. Most students will then drop to 3 subjects in year 13.
- Students will sit **school examinations in the summer of year 12**. If students do not gain passes in three subjects they will not be able to proceed into Year 13 to complete their studies.
- Students who **do not have a Grade 4 in Maths or English** (either language or literacy) are required to retake a GCSE in that subject in Year 12. Lessons will be provided for this purpose.



The
Kimberley
School