



SCIENCE

H1 H6 H12

Why do bee and wasp stings hurt? What would happen if a bee and a wasp stung you in the same place? Which animal has the most powerful sting? Find out in science!



ENGLISH

C1 C5 C7

Join us for some creative tasks on Character, Setting and Plot: the essential ingredients of a great story.



ICT

A15/A16

Block-Based Programming using Kodu, PC Building, How our Virtual Learning Environment (VLE) can support home/school learning.



LANGUAGES

(MFL) A10

Join in with some vocabulary games, colour coding and code cracking with MFL staff



D&T

B1-B3, B6, B7

Take a tour of our excellent facilities across the disciplines of Design and Technology. All of our rooms are open for you to view, some with fun activities. In Graphics we challenge you to design and draw like a designer, witness the laser cutter and 3D printer. Resistant Materials has a range of products to see what challenge the norm or 'making a box' Upstairs we have Textiles where you can see fashion in action and undertake challenges to make you think. Across the corridor we have Food Preparation & Nutrition where you can spot hazards and do some taste testing.



MATHS

C18 C20

Come and take part in our mathematical puzzles and solve the treasure hunt. Hear about the current students experience of lessons and the wider reaching application of maths.



CANTEEN

Hot Cateen/Core

Please pop down to the canteen to sample some of our school catering. Available up to 6.15pm



RE

A20

Take some time to talk to staff and students about why RE matters in the modern curriculum and learn about some of the issues which are taught through RE.



HISTORY

A21

Help reveal treasures once lost to time by trying your hand as a history detective.



ART

F2 F3

Take in the many fantastic pieces produced by the pupils of Kimberley school and take part in a fun taster activity.



GEOGRAPHY

A18

Join students as they find their way around the world.



DRAMA

F4

Performing from a Text; KS3 Drama students block a play in one evening.



MUSIC

D1

Year 10 & 11 students will be showcasing their solo and ensemble GCSE pieces.



PERSONAL DEVELOPMENT

Hall 2

Speak to Mrs Machin about the Personal Development Curriculum students follow through Year 7-11



SIXTH FORM

Reception

Speak to Mr Jolly about what is on offer in the 6th Form. We would love every student to stay on with us beyond Year 11.

The
Kimberley
School

YEARS
5&6

OPEN
EVENING

2025

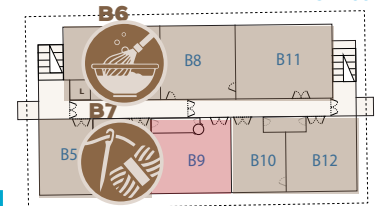
ACTIVITIES



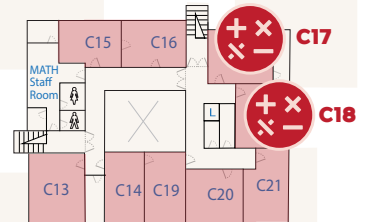
The Kimberley School

YEARS 5&6 OPEN EVENING ACTIVITY ROOM MAP

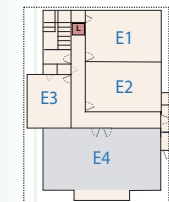
Technology Base 'B'
First Floor



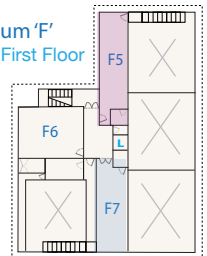
The Core 'C'
First Floor



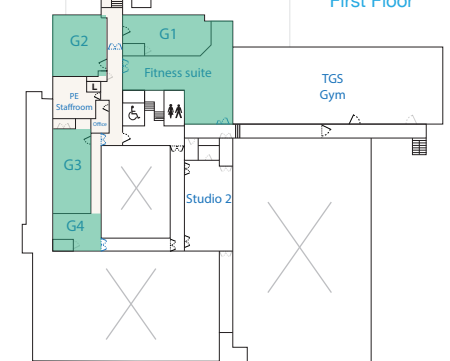
Sixth Form Centre of
Excellence 'E'
First Floor



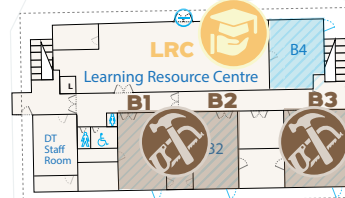
Arts Forum 'F'
First Floor



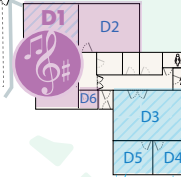
Sports Centre 'G'
First Floor



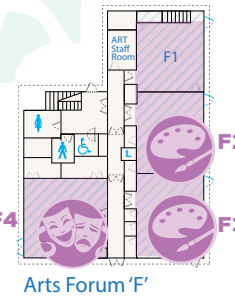
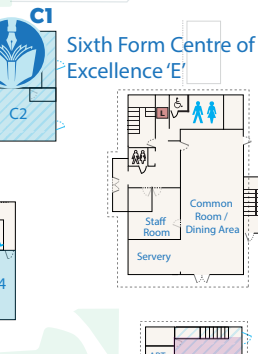
Technology Base 'B'



Music Department 'D'



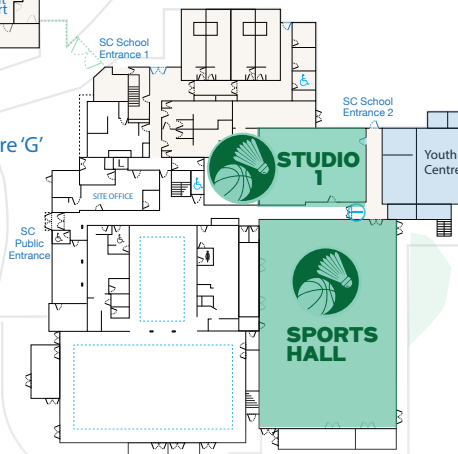
Sixth Form Centre of
Excellence 'E'



The Core 'C'



Sports Centre 'G'



Main Academy 'A'

Visitors Car Park

(8:15-8:40)



Faculty Areas:

ICT / PC Suites	Arts
Modern Foreign Languages	Science
English & Media	Design & Technology
Maths	PE.
	Humanities