



# STEP UP TO 6TH FORM

KIMBERLEY SCHOOL TRANSITION INFORMATION

## Fine Art A Level AQA

### COURSE DETAILS

UNIT 1

#### Personal Investigation

- This is a practical investigation supported by written material.
- Students are required to conduct a practical investigation, into an idea, issue, concept or theme, supported by written material. The focus of the investigation must be identified independently by the student and must lead to a finished outcome or a series of related finished outcomes.
- The investigation should be a coherent, in-depth study that demonstrates the student's ability to construct and develop a sustained line of reasoning from an initial starting point to a final realisation.
- The investigation must show clear development from initial intentions to the final outcome or outcomes.
- It must include evidence of the student's ability to research and develop ideas and relate their work in meaningful ways to relevant critical/contextual materials.
- The investigation must be informed by an aspect of contemporary or past practice of artists, photographers, designers or craftspeople.



#### Externally Set Assignment

Separate question papers will be provided for each title. Each question paper will consist of a choice of eight questions to be used as starting points. Students are required to select one. Students will be provided with examination papers on 1 February, or as soon as possible after that date.

UNIT 2

#### Preparatory Period (from 1st Feb)

Following receipt of the paper students should consider the starting points and select one. Preparatory work should be presented in any suitable format, such as mounted sheets, design sheets, sketchbooks, workbooks, journals, models and maquettes.

#### Supervised Time

Following the preparatory period, students must complete 15 hours of unaided, supervised time. In the 15 hours students must produce a finished outcome or a series of related finished outcomes, informed by their preparatory work.

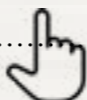
#### ASSESSMENT

- UNIT 1 (60%)
- UNIT 2 (40%)
- Prep Evidence & 15hrs Supervised



#### LINK TO THE SPECIFICATION

See a detailed document of what we will cover in this course:  
<https://filestore.aqa.org.uk/resources/art-and-design/specifications/AQA-ART-SP-2015.PDF>  
 A students' own guide: [www.youtube.com/watch?v=jhnAURA6n9I](http://www.youtube.com/watch?v=jhnAURA6n9I)



# STEP UP TO 6TH FORM

KIMBERLEY SCHOOL TRANSITION INFORMATION

## Fine Art A Level AQA

Work you can do to prepare for A Level study

#### Wider Reading

- The Story of Art – Ernst Gombrich
- The Shock of the New – Robert Hughes

#### FILM & TV



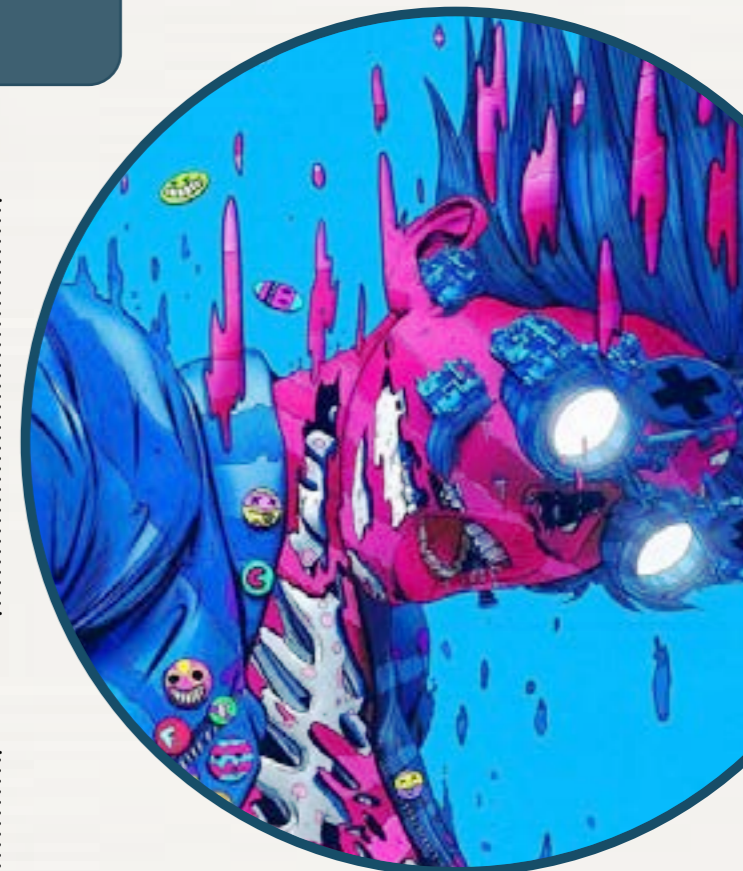
(Documentaries Available Online)

- The Secret of Drawing
- The Genius of Photography
- The Private Life of a Masterpiece
- Simon Schama – the Power of Art
- Civilisation
- Netflix
- McQueen
- Abstract – The Art of Design
- Enter the Anime
- Struggle – the Life and Lost Art of Szukalski

#### YOUTUBE



The Art Assignment  
 Ahmed Aldoori  
 Tutvid  
 Lucidpixul



#### USEFUL RESOURCE LINKS



- **The Student Art Guide** [www.studentartguide.com](http://www.studentartguide.com)  
The best website for Art students! Full of ideas, advice and examples of great student Art!
- **Pinterest** [www.pinterest.com](http://www.pinterest.com)  
Type in a topic and it will generate loads of images around that theme
- **Artist A Day** [www.artistaday.com](http://www.artistaday.com)  
A great resource for finding new /contemporary artists
- **But Does It Float** [www.butdoesitfloat.com](http://www.butdoesitfloat.com)  
Mind blowing art, updated every day
- **Booooooom** [www.booooooom.com](http://www.booooooom.com)  
Great illustration and graphic design
- **Tumblr** [www.tumblr.com](http://www.tumblr.com)  
A bit like Pinterest. Type in a subject and see what comes up
- **The Guardian** [www.guardian.co.uk](http://www.guardian.co.uk)  
Great resource for current affairs, politics, society, culture
- **Colossal** [www.thisiscoolossal.com/](http://www.thisiscoolossal.com/) - Art, design and visual culture